



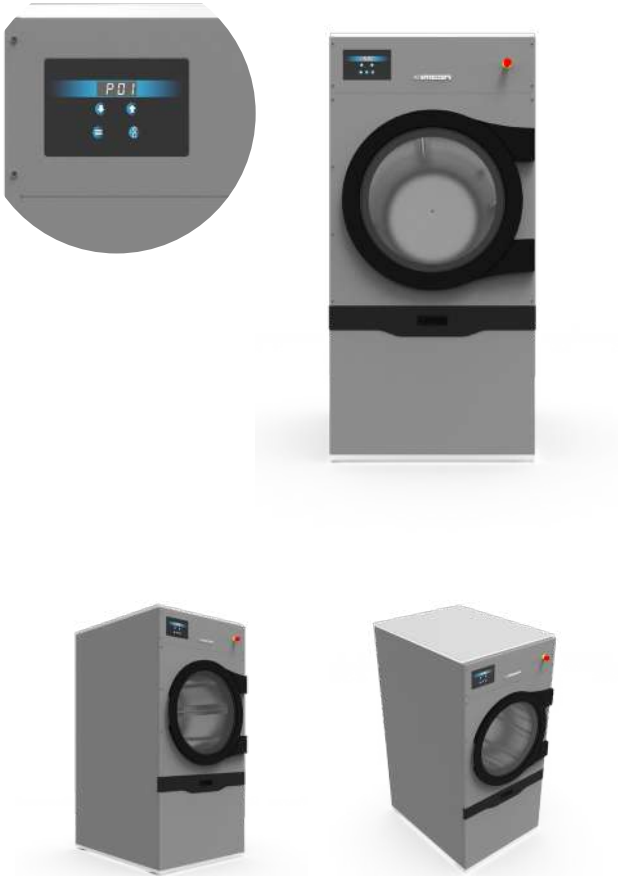
ES EASY LINE

ES 11

ES 14

ES 18

Tumble dryers EL ES 11/14/18 kg



Plus ES EASY Line



IM7Easy
4 Digit Dome Buttons



D-FLOW SYSTEM new axial airflow



Automatic Cooldown



Galvanised basket
with **SOFT CARE**



Big door
with reversible opening



Anti-crushing filter

Scan for more info



OPTIONS AND ACCESSORIES

- Automatic drum rotation inversion
- AISI 304 stainless steel drum
- AISI 304 stainless steel steam exchanger
- Payment systems for self-service use
- AISI 304 stainless steel Lint filter
- Filter in AISI 304 stainless steel for steam exchanger

TECHNICAL DATA

EL ES 11

EL ES 14

EL ES 18

• Capacity 1:18 - 1:20	10,8 - 9,7 Kg (23.8 - 21.3 lb)	13,7 - 12,4 Kg (30.2 - 27.3 lb)	17,8 - 16,1 Kg (39.2 - 35.5 lb)
• Drum diameter Ø	756 mm (29.7 inch.)	756 mm (29.7 inch.)	756 mm (29.7 inch.)
• Drum depth Ø	445 mm (17.5 inch.)	565 mm (22.2 inch.)	736 mm (28.9 inch.)
• Drum volume	195 lt	247,5 lt	322 lt
• Load diameter Ø	560 mm (22 inch.)	560 mm (22 inch.)	560 mm (22 inch.)
• Standard speed	38 r.p.m.	38 r.p.m.	38 r.p.m.
• Air sound intensity	61 dB (A)	61 dB (A)	61 dB (A)
• Heating leakage	15 %	15 %	15 %
• Vent air\smokes Ø	150 mm (5.9 inch.)	150 mm (5.9 inch.)	150 mm (5.9 inch.)
• Air flow	1200 m³/h (710 CFM)	1200 m³/h (710 CFM)	1200 m³/h (710 CFM)
• Max counterpressure	10 mt	10 mt	10 mt
• Machine dimension: WxDxH (100 mm = 3.93 inch.)	789×796×1647 mm	789×916×1647 mm	789×1086×1647 mm
• Net weight (electric \ gas \ steam) (1 Kg = 2,205 lb)	191 \ 187 \ 206 Kg	202 \ 198 \ 217 Kg	218 \ 220 \ 239 Kg
• Std. packing dimension: WxDxH (100 mm = 3.93 inch.)	836×790×1810 mm	836×910×1810 mm	836×1080×1810 mm
• Wooden case dimension: WxDxH (100 mm = 3.93 inch.)	- mm	- mm	- mm
• Std. gross weight (electric \ gas \ steam) (1 Kg = 2,205 lb)	200 \ 196 \ 215 Kg	212 \ 208 \ 227 Kg	231 \ 233 \ 252 Kg
• Std. packaging volume	1,2 mc (42.3 ft³)	1,4 mc (49.4 ft³)	1,6 mc (56.5 ft³)
• STD. packed machines in to 20' container	14 pz.	12 pz.	12 pz.
• STD. packed machines in to 40' container	30 pz.	28 pz.	28 pz.

DATA BY TYPE OF HEATING

• Electrical heating power / Electrical total power (electric machines)	6 × 2 = 12 kW / 12,7 kW	6 × 2 = 12 kW / 12,7 kW	6 × 3 = 18 kW / 18,7 kW
• Electric absorption (50/60Hz) 3ph380V-480V(+N)/3ph220V-240V/1ph230V (electric machines)	20 / 35 / 60 A	20 / 35 / 60 A	27 / 47 / 81 A
• Electric energy consumption* (electric machines)	6,1 kWh	8,3 kWh	10,7 kWh
• Steam consumption (5 bar)* (steam machines)	26 kg	36 kg	46 kg
• Electrical power* (steam machines)	0,7 kW	0,7 kW	0,7 kW
• Electric absorption (50/60Hz) 3ph380V-480V(+N)/3ph220V-240V/1ph230V (steam machines)	1,5 / 3 / 4 A	1,5 / 3 / 4 A	1,5 / 3 / 4 A
• Electric energy consumption* (steam machines)	0,2 kWh	0,2 kWh	0,2 kWh
• Heating power / Derated heating power (NATURAL GAS machines)	23,5 kW / 13 kW	23,5 kW / 13 kW	23,5 kW / 13 kW
• Heating power / Derated heating power (GAS GPL machines)	21 kW / 11 kW	21 kW / 11 kW	21 kW / 11 kW
• Consumption NATURAL GAS / Consumption GPL (GAS machines)	0,7 m³ / 0,5 kg	0,9 m³ / 0,7 kg	1,1 m³ / 0,8 kg
• Electrical power* (GAS machines)	0,7 kW	0,7 kW	0,7 kW
• Electric absorption (50/60Hz) 3ph380V-480V(+N)/3ph220V-240V/1ph230V (GAS machines)	1,5 / 3 / 4 A	1,5 / 3 / 4 A	1,5 / 3 / 4 A
• Electric energy consumption* (GAS machines)	0,2 kWh	0,2 kWh	0,2 kWh
• Cable section (electric machines / steam and GAS machines)	6-10-16 / 2,5 mm²	6-10-16 / 2,5 mm²	10-16-25 / 2,5 mm²

Pos. 1 - Door

Pos. 2 - Steam in 1" inch. (only steam heated machine)

Pos. 3 - Steam out 1" inch. (only steam heated machine)

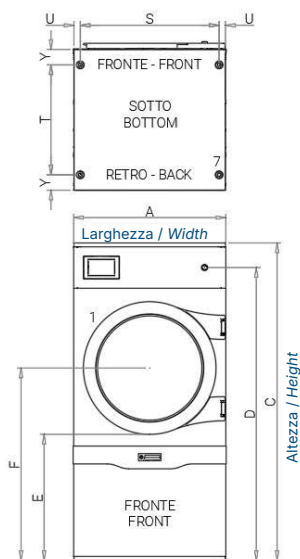
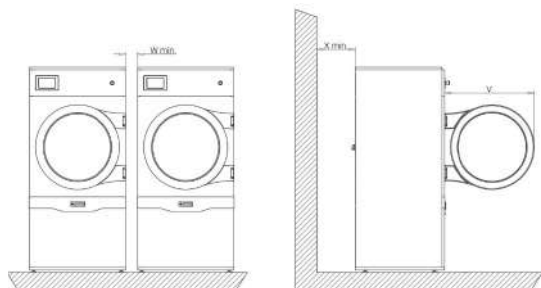
Pos. 4 - GAS supply ¾ " inch.(only GAS heated machine)

Pos. 5 - Electrical power supply

Pos. 6 - Humid air and smoke (GAS heated machines) vent

Pos. 7 - Feet

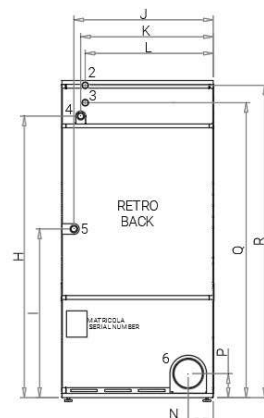
Pressure 0,5 - 12 bar (only steam heated machine)



NOTE: all technical data refers to reverse action machines.

NOTE: machines is on 4 M10 feet (pos. 7).

*Std. cycle: load at nominal value of cotton (180gr/m²) wet with residual humidity of 50% and brought to 0%; 3' cool down.



100 mm = 3.93 inch. -factor conversion 1 / 25,4

mm	A	B	C	D	E	F	G	H	I	J	K	L	N	P	Q	R	S	T	U	V	W _{min}	X _{min}	Y	Z
EL ES 11	789	796	1647	1520	655	999	20	1462	876	724	688	573	130	125	1532	1622	720	570	33	735	10	500	80	732
EL ES 14	789	916	1647	1520	655	999	20	1462	876	724	688	573	130	125	1532	1622	720	690	33	735	10	500	80	852
EL ES 18	789	1086	1647	1520	655	999	20	1462	876	724	688	573	130	125	1532	1622	720	860	33	735	10	500	80	1022



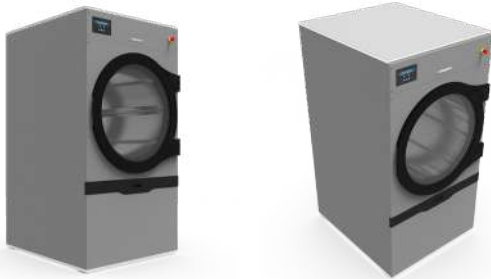
www.imesa.it

IMESA S.p.A. Via degli Olmi, 22 - 31040 Cessalto (Treviso) Italy

IMESA
designing your clean



Tumble dryers EL ES 23/26 kg



Scan for more info



Plus ES EASY Line



IM7Easy
4 Digit Dome Buttons



D-FLOW SYSTEM new axial airflow



Automatic Cooldown



Alternating drum rotation direction

Galvanised basket
with **SOFT CARE**



Big door
with reversible opening



Anti-crushing filter

OPTIONS AND ACCESSORIES

- AISI 304 stainless steel drum
- AISI 304 stainless steel steam exchanger
- Payment systems for self-service use
- AISI 304 stainless steel Lint filter
- Filter in AISI 304 stainless steel for steam exchanger

NOTE: The images in this document are for illustrative purposes only. The appearance, equipment and details of the actual product may vary without notice.

TECHNICAL DATA

	EL ES 23	EL ES 26
• Capacity 1:18 - 1:20	23,1 - 20,9 Kg (50.9 - 46 lb)	25,6 - 23,1 Kg (56.4 - 50.9 lb)
• Drum diameter Ø	977 mm (38.4 inch.)	977 mm (38.4 inch.)
• Drum depth Ø	565 mm (22.2 inch.)	625 mm (24.6 inch.)
• Drum volume	417 lt	462 lt
• Load diameter Ø	777 mm (30.5 inch.)	777 mm (30.5 inch.)
• Standard speed	44 r.p.m.	44 r.p.m.
• Air sound intensity	61 dB (A)	61 dB (A)
• Heating leakage	15 %	15 %
• Vent air\smokes Ø	200 mm (7.8 inch.)	200 mm (7.8 inch.)
• Air flow	1680 m³/h (990 CFM)	1680 m³/h (990 CFM)
• Max counterpressure	10 mt	10 mt
• Machine dimension: WxDxH (100 mm = 3.93 inch.)	1010×916×1932 mm	1010×976×1932 mm
• Net weight (electric \ gas \ steam) (1 Kg = 2,205 lb)	261 \ 267 \ 286 Kg	270 \ 280 \ 299 Kg
• Std. packing dimension: WxDxH (100 mm = 3.93 inch.)	1057×910×2095 mm	1057×970×2095 mm
• Wooden case dimension: WxDxH (100 mm = 3.93 inch.)	- mm	- mm
• Std. gross weight (electric \ gas \ steam) (1 Kg = 2,205 lb)	273 \ 279 \ 298 Kg	283 \ 293 \ 313 Kg
• Std. packaging volume	2 mc (70.6 ft³)	2,1 mc (74.1 ft³)
• STD. packed machines in to 20' container	12 pz.	12 pz.
• STD. packed machines in to 40' container	26 pz.	24 pz.

DATA BY TYPE OF HEATING

• Electrical heating power / Electrical total power (electric machines)	6 × 4 = 24 kW / 25,1 kW	6 × 4 = 24 kW / 25,1 kW
• Electric absorption (50/60Hz) 3ph380V-480V(+N)/3ph220V-240V/1ph230V (electric machines)	37 / 64 / 111 A	37 / 64 / 111 A
• Electric energy consumption* (electric machines)	12 kWh	13 kWh
• Steam consumption (5 bar)* (steam machines)	49 kg	52 kg
• Electrical power* (steam machines)	1,1 kW	1,1 kW
• Electric absorption (50/60Hz) 3ph380V-480V(+N)/3ph220V-240V/1ph230V (steam machines)	2,1 / 4 / 6,3 A	2,1 / 4 / 6,3 A
• Electric energy consumption* (steam machines)	0,5 kWh	0,5 kWh
• Heating power / Derated heating power (NATURAL GAS machines)	32 kW / 23 kW	32 kW / 23 kW
• Heating power / Derated heating power (GAS GPL machines)	32 kW / 23 kW	32 kW / 23 kW
• Consumption NATURAL GAS / Consumption GPL (GAS machines)	1,6 m³ / 1,1 kg	1,6 m³ / 1,1 kg
• Electrical power* (GAS machines)	1,1 kW	1,1 kW
• Electric absorption (50/60Hz) 3ph380V-480V(+N)/3ph220V-240V/1ph230V (GAS machines)	2,1 / 4 / 6,3 A	2,1 / 4 / 6,3 A
• Electric energy consumption* (GAS machines)	0,5 kWh	0,5 kWh
• Cable section (electric machines / steam and GAS machines)	10-16-25 / 2,5 mm²	10-16-25 / 2,5 mm²

Pos. 1 - Door

Pos. 2 - Steam in 1" inch. (only steam heated machine)

Pos. 3 - Steam out 1" inch. (only steam heated machine)

Pos. 4 - GAS supply ¾ " inch.(only GAS heated machine)

Pos. 5 - Electrical power supply

Pos. 6 - Humid air and smoke (GAS heated machines) vent

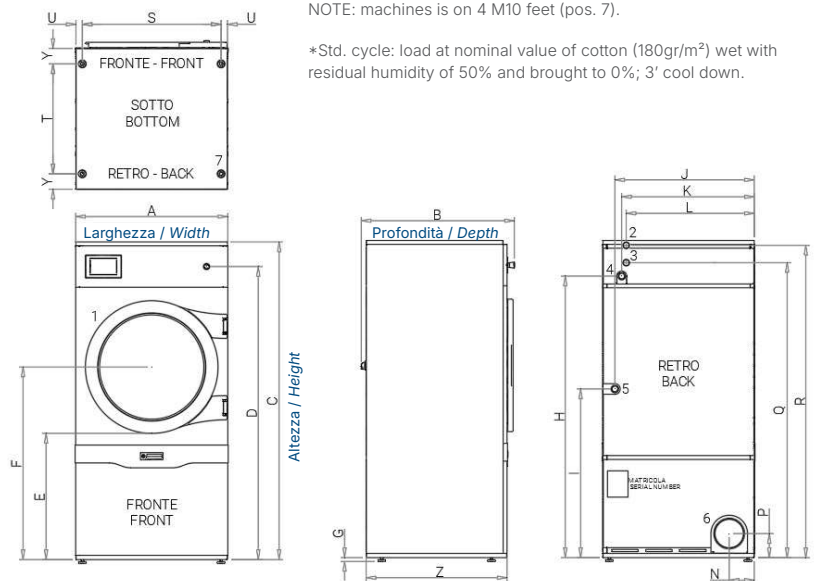
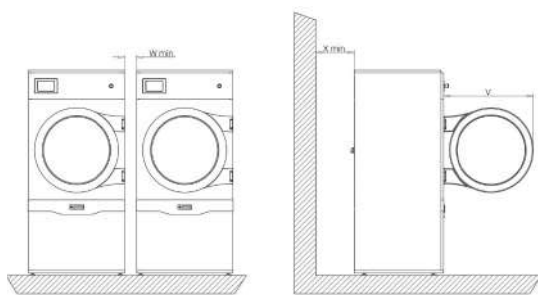
Pos. 7 - Feet

Pressure 0,5 - 12 bar (only steam heated machine)

NOTE: all technical data refers to reverse action machines.

NOTE: machines is on 4 M10 feet (pos. 7).

*Std. cycle: load at nominal value of cotton (180gr/m²) wet with residual humidity of 50% and brought to 0%; 3' cool down.

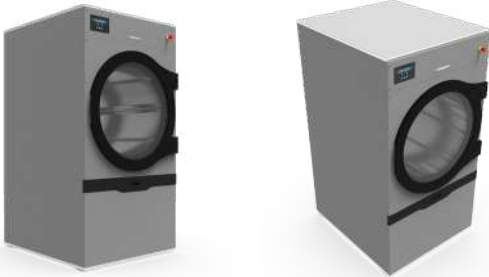


100 mm = 3.93 inch. -factor conversion 1 / 25,4

mm	A	B	C	D	E	F	G	H	I	J	K	L	N	P	Q	R	S	T	U	V	W _{min}	X _{min}	Y	Z
EL ES 23	1010	916	1932	1805	700	1173	20	1747	1031	943	947	669	155	150	1817	1907	941	690	33	975	10	500	80	852
EL ES 26	1010	976	1932	1805	700	1173	20	1747	1031	943	947	669	155	150	1817	1907	941	750	33	975	10	500	80	912



Tumble dryers EL ES 32/36 kg



Scan for more info



Plus ES EASY Line



IM7Easy
4 Digit Dome Buttons



D-FLOW SYSTEM new axial airflow



Automatic Cooldown



Alternating drum rotation direction



Big door
with reversible opening



Anti-crushing filter

OPTIONS AND ACCESSORIES

- AISI 304 stainless steel drum
- AISI 304 stainless steel steam exchanger
- Payment systems for self-service use
- AISI 304 stainless steel Lint filter
- Filter in AISI 304 stainless steel for steam exchanger

NOTE: The images in this document are for illustrative purposes only. The appearance, equipment and details of the actual product may vary without notice.

TECHNICAL DATA

EL ES 32

EL ES 36

• Capacity 1:18 - 1:20	31,8 - 28,6 Kg (70.1 - 63 lb)	35,9 - 32,3 Kg (79.1 - 71.2 lb)
• Drum diameter Ø	977 mm (38.4 inch.)	977 mm (38.4 inch.)
• Drum depth Ø	775 mm (30.5 inch.)	875 mm (34.4 inch.)
• Drum volume	572 lt	646 lt
• Load diameter Ø	777 mm (30.5 inch.)	777 mm (30.5 inch.)
• Standard speed	44 r.p.m.	44 r.p.m.
• Air sound intensity	61 dB (A)	61 dB (A)
• Heating leakage	15 %	15 %
• Vent air\smokes Ø	200 mm (7.8 inch.)	200 mm (7.8 inch.)
• Air flow	1680 m³/h (990 CFM)	1680 m³/h (990 CFM)
• Max counterpressure	10 mt	10 mt
• Machine dimension: WxDxH (100 mm = 3.93 inch.)	1010×1126×1932 mm	1010×1226×1932 mm
• Net weight (electric \ gas \ steam) (1 Kg = 2,205 lb)	282 \ 293 \ 312 Kg	295 \ 305 \ 324 Kg
• Std. packing dimension: WxDxH (100 mm = 3.93 inch.)	1057×1120×2095 mm	1057×1210×2095 mm
• Wooden case dimension: WxDxH (100 mm = 3.93 inch.)	- mm	- mm
• Std. gross weight (electric \ gas \ steam) (1 Kg = 2,205 lb)	297 \ 308 \ 327 Kg	311 \ 321 \ 340 Kg
• Std. packaging volume	2,5 mc (88.2 ft³)	2,7 mc (95.3 ft³)
• STD. packed machines in to 20' container	10 pz.	10 pz.
• STD. packed machines in to 40' container	22 pz.	21 pz.

DATA BY TYPE OF HEATING

• Electrical heating power / Electrical total power (electric machines)	6 × 5 = 30 kW / 31,1 kW	6 × 5 = 30 kW / 31,1 kW
• Electric absorption (50/60Hz) 3ph380V-480V(+N)/3ph220V-240V/1ph230V (electric machines)	45 / 78 / 135 A	45 / 78 / 135 A
• Electric energy consumption* (electric machines)	15 kWh	18 kWh
• Steam consumption (5 bar)* (steam machines)	64 kg	73 kg
• Electrical power* (steam machines)	1,1 kW	1,1 kW
• Electric absorption (50/60Hz) 3ph380V-480V(+N)/3ph220V-240V/1ph230V (steam machines)	2,1 / 4 / 6,3 A	2,1 / 4 / 6,3 A
• Electric energy consumption* (steam machines)	0,5 kWh	0,5 kWh
• Heating power / Derated heating power (NATURAL GAS machines)	42 kW / 34 kW	42 kW / 34 kW
• Heating power / Derated heating power (GAS GPL machines)	42 kW / 34 kW	42 kW / 34 kW
• Consumption NATURAL GAS / Consumption GPL (GAS machines)	2,3 m³ / 1,5 kg	2,8 m³ / 1,7 kg
• Electrical power* (GAS machines)	1,1 kW	1,1 kW
• Electric absorption (50/60Hz) 3ph380V-480V(+N)/3ph220V-240V/1ph230V (GAS machines)	2,1 / 4 / 6,3 A	2,1 / 4 / 6,3 A
• Electric energy consumption* (GAS machines)	0,5 kWh	0,5 kWh
• Cable section (electric machines / steam and GAS machines)	10-16-35 / 2,5 mm²	10-16-35 / 2,5 mm²

Pos. 1 - Door

Pos. 2 - Steam in 1" inch. (only steam heated machine)

Pos. 3 - Steam out 1" inch. (only steam heated machine)

Pos. 4 - GAS supply ¾ " inch.(only GAS heated machine)

Pos. 5 - Electrical power supply

Pos. 6 - Humid air and smoke (GAS heated machines) vent

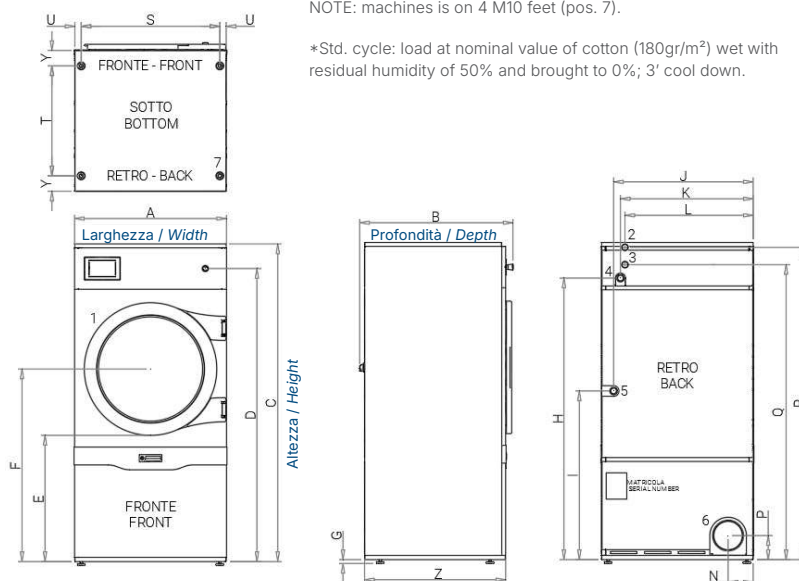
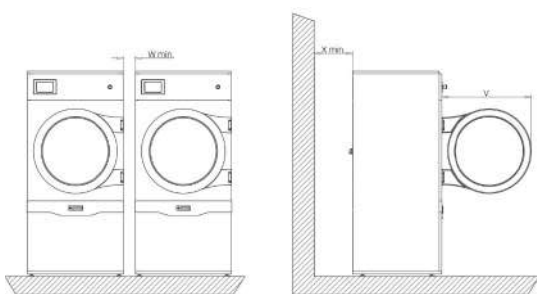
Pos. 7 - Feet

Pressure 0,5 - 12 bar (only steam heated machine)

NOTE: all technical data refers to reverse action machines.

NOTE: machines is on 4 M10 feet (pos. 7).

*Std. cycle: load at nominal value of cotton (180gr/m²) wet with residual humidity of 50% and brought to 0%; 3' cool down.



mm A B C D E F G H I J K L N P Q R S T U V W_{min} X_{min} Y Z

EL ES 32 1010 1126 1932 1805 700 1173 20 1747 1031 943 947 669 155 150 1817 1907 941 900 33 975 10 500 80 1062

EL ES 36 1010 1226 1932 1805 700 1173 20 1747 1031 943 947 669 155 150 1817 1907 941 1000 33 975 10 500 80 1162